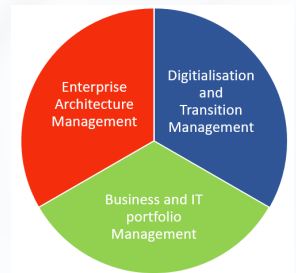
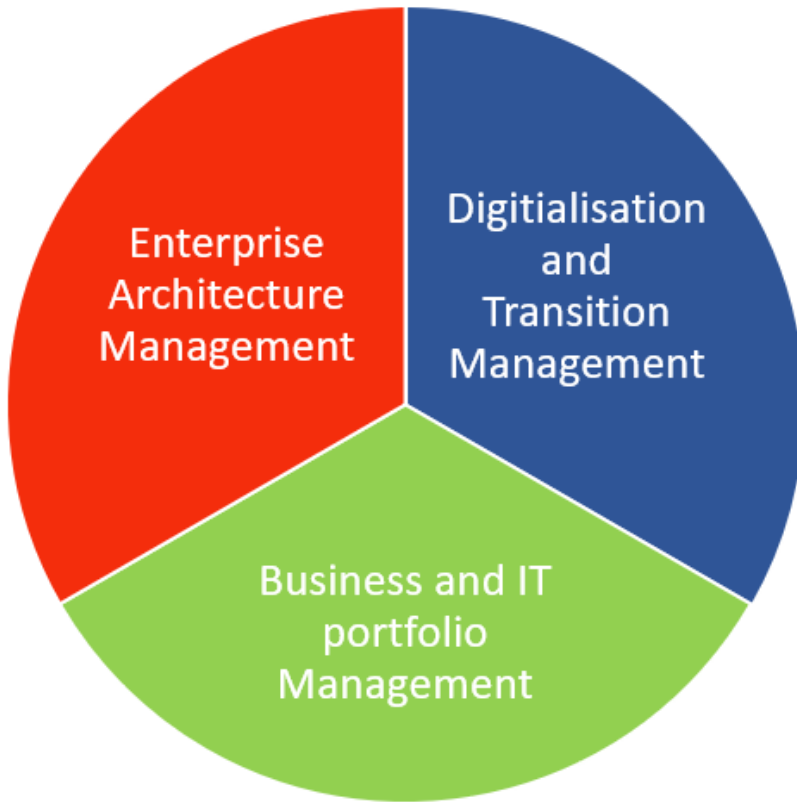


## Content

- JAMES Consulting
- Experienced & Pragmatic
- Enterprise Architecture Management
- Digitalization and Transition Management
- Business and IT portfolio management Services
- Building an EA Function – example 1
- Building an EA Function – Example 2
- Empower you

WELCOME TO  
JAMES Consulting

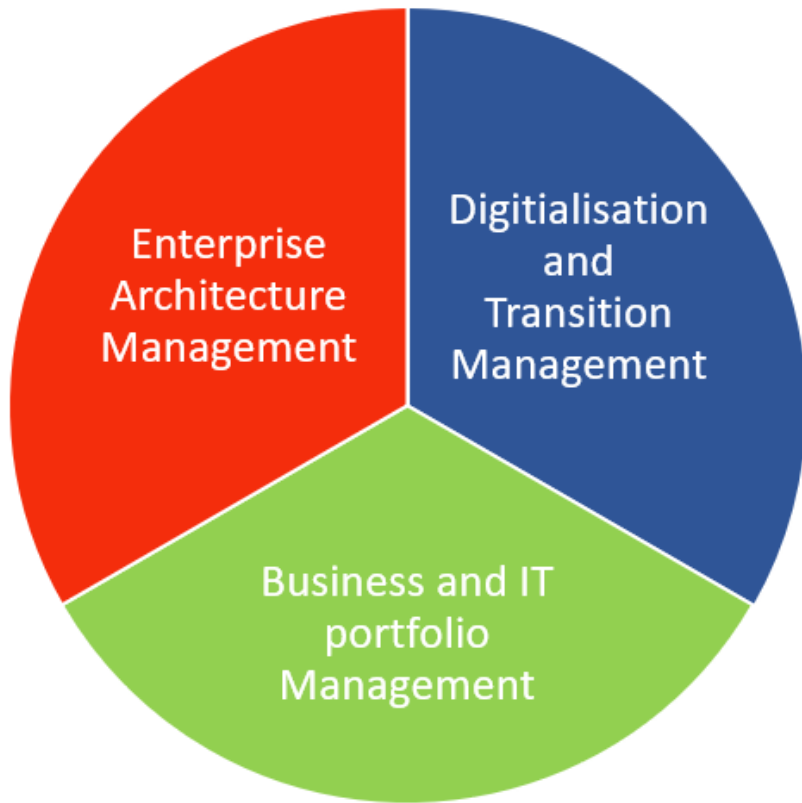




# JAMES Consulting

---

- At JAMES Consulting we are working with three areas of the EA discipline - Enterprise Architecture Management, Digitalisation and Transition Management, Business and IT portfolio Management. We offer services in all three areas and services that glue the areas together by focusing on their intersection
- JAMES Consulting are established by Allan Baungaard Jakobsen and Jan Staack as an umbrella and network to generate the knowledge and learnings from the best experiences personally and in our network
- You are invited to be included in our network



## Experienced & Pragmatic

- We are Experienced Enterprise Architects with a pragmatic approach towards working with business and technology transformation.
- Complexity and focus on coherency are often part of the assignments we undertake as architect or advisor for management and project management.
- We have a pragmatic approach towards working with business and technology transformation and intersection – and can work in the broad space of both demand side and solution provisioning. We prefer an analytical focus to provide well-reasoned decision support and influence.
- In addition, we are experienced as mentors and has received high rating from both mentees and managers.



## Enterprise Architecture Management

# Enterprise Architecture Management

- EA mentoring for CIO / EA chief / EA architect group / Organization
- EA Review of the organization's current EA efforts
- EA Strategy for building new EA initiatives
- EA Vision for EA function efforts
- EA Principles targeted for the organization's use of EA
- EA Maturity Measurement of current EA efforts
- EA and Operating Model review for EA function and IT operating model - analysis and advice
- EA tools to support EA deliveries
- EA Implementation - roll out of EA recommendations

A blue circular graphic, resembling a quarter-circle or a fan shape, positioned on the left side of the slide. It contains the text "Digitalization and Transition Management" in white.

Digitalization  
and Transition  
Management

A small yellow vertical bar located to the left of the main title.

# Digitalization and Transition Management

---

- Cloud strategy and implementation of current and future use of Cloud service models in the organisation
- Current and new Technology evaluation to recommendation on replacement
- New Technology analyse, recommendation and advisory on implementation of the technology
- ERP / SAP Transition - Evaluation of current AS-IS state, and recommendation on TO BE state

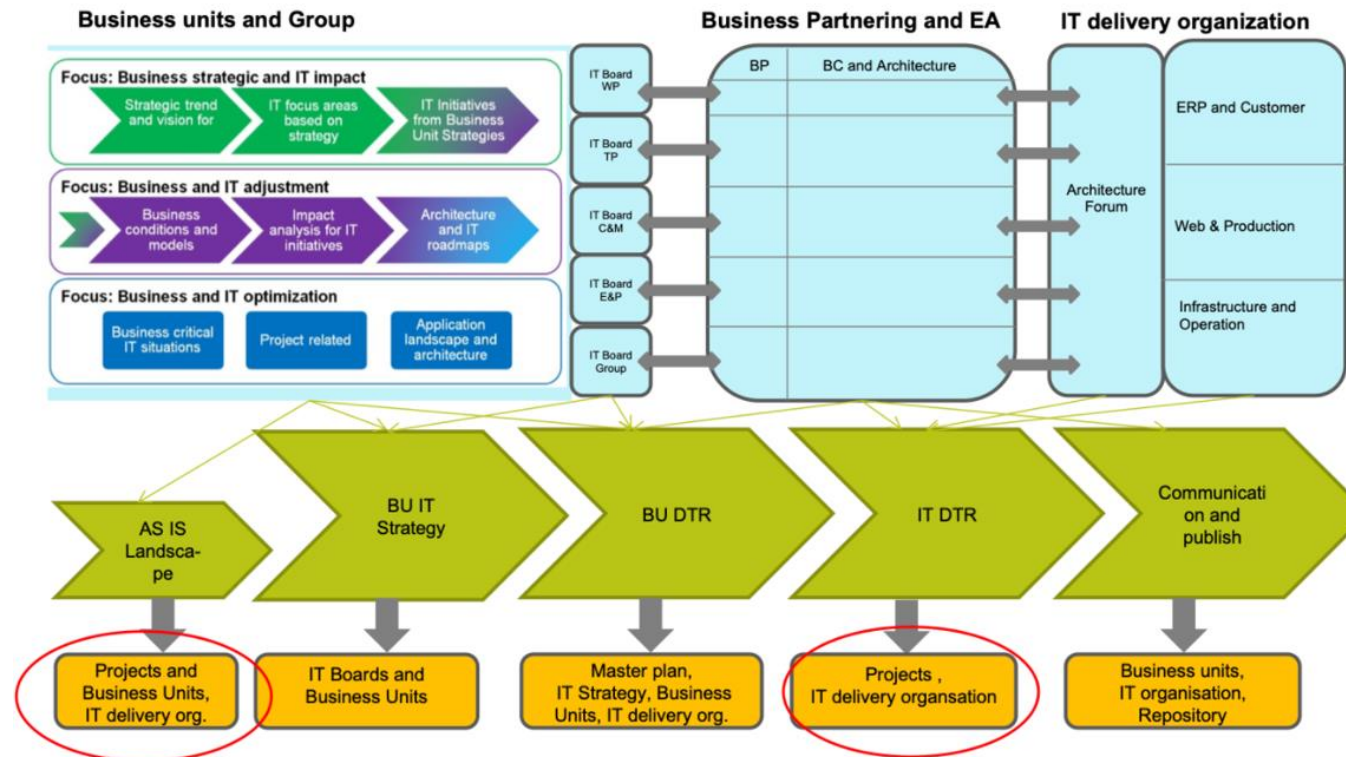
# Business and IT portfolio management Services



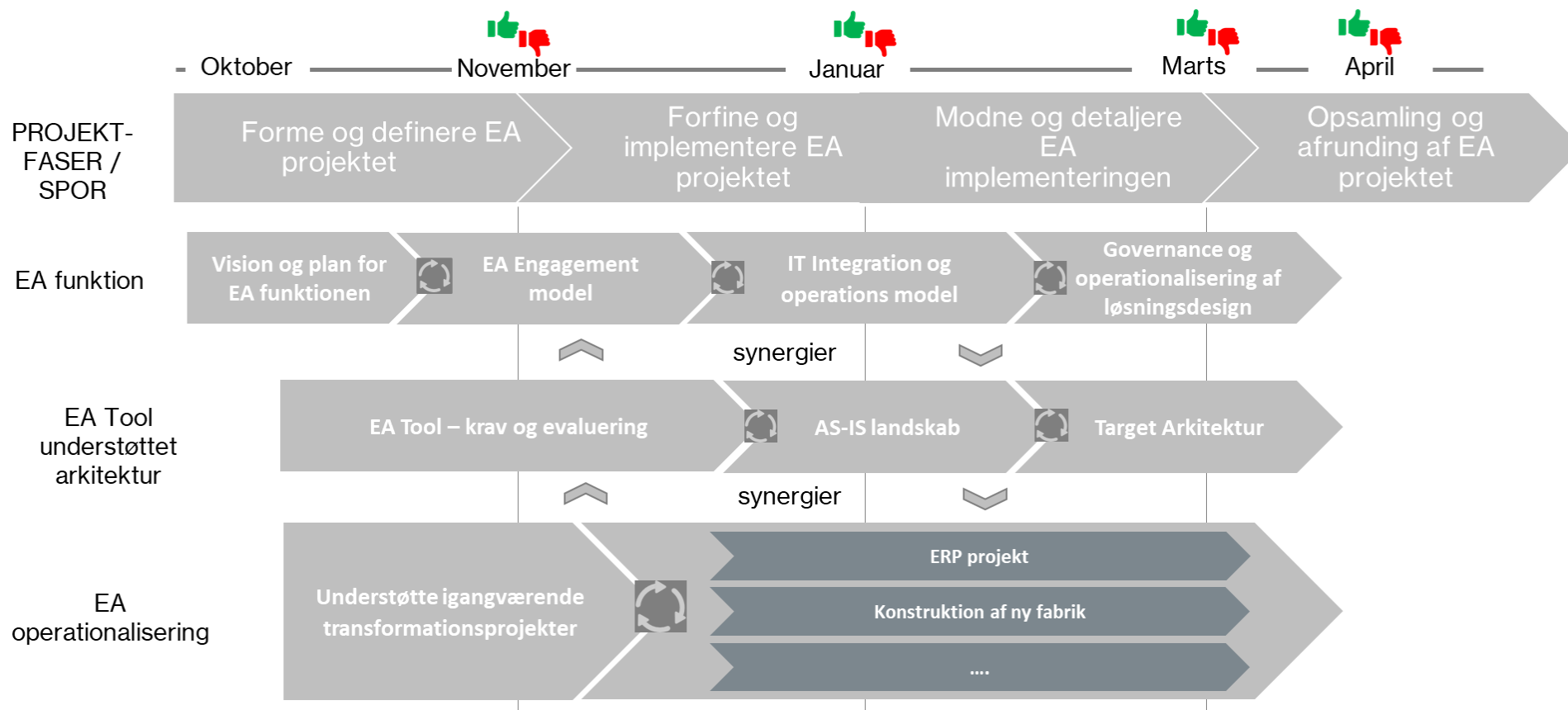
Business and  
IT portfolio  
Management

- Application portfolio management – Establishment of an APM initiative, collection of applications and systems, analyse of the current use and possible sanitation of the applications, processes and organisational implementation
- EA / high level solution architecture – The support of EA in the projects to facilitate the selection of the TO BE architecture
- ERP / SAP strategy / roadmap Evaluation of the current use of SAP and the possible gains in upgrading or adding functionality to the SAP solutions, described in a strategy
- Business Capability Map, evaluation of the organisations business capability map
- Services implementation, the framework for services, and the description of the process and templates to be used
- Technology roadmaps for selected areas described in AS IS and TO BE roadmap to be followed for each area

# Building an EA Function – example 1

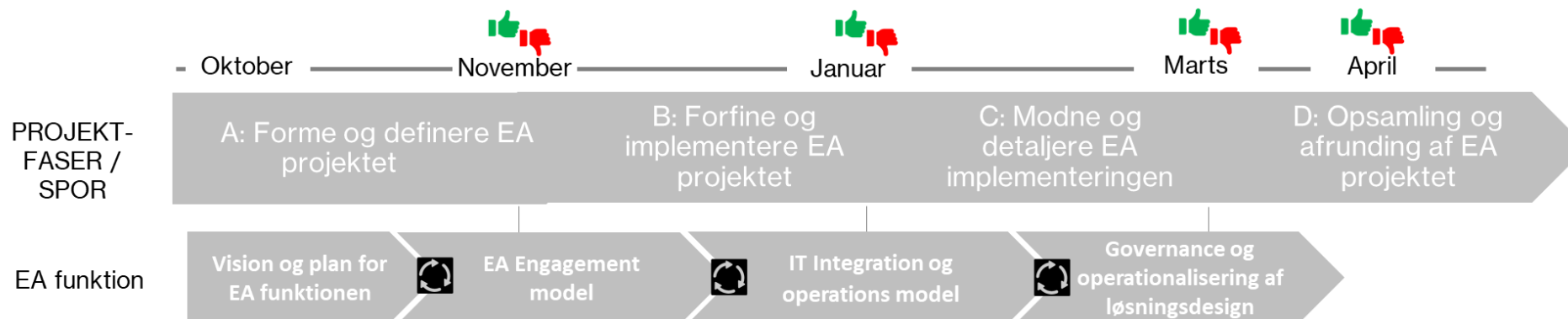


# Building an EA Function – Example 2





# EA Function



Eksempler på resultater

## Enterprise Architecture in Production Company

Building a strong core architecture to set the context for Business Enabling IT solutions

### Background and Challenges

- The context for the IT solutions in Production Company has changed and the speed of changes in the Business and Supporting functions has increased
- Production Company is moving from Diversified Business operating models towards more Unified Business operating models

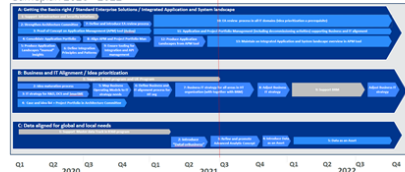
### Enterprise Architecture (EA)

- EA will set the context for IT solutions and align with the future Business Operating models
- EA will support prioritisation with Business focus and act as catalyst for promoting the IT solutions enabling Unified Business operating models
- Unified Business operating models also requires EA to ensure a connected and integrated IT landscape



## Enterprise Architecture in Production Company

Gameplan 2020 - 2022



## Enterprise Architecture in Production Company

Revisit EA Agenda

### Background (IT has supported the Business)

- The IT portfolio in Production Company has in the past years focused on standardizing technologies
- Projects has been focused on utilizing and optimizing the chosen technologies and systems
- IT and Business Unit leaders has prioritized within the capacity of IT resources

### Challenges (IT must enable the Business)

- Production Company is maturing and moving towards companywide standardized Processes, Data and Enterprise Applications
- Projects must now align with architecture objectives and interdependencies in between the projects
- Senior management and process leaders are setting the priority

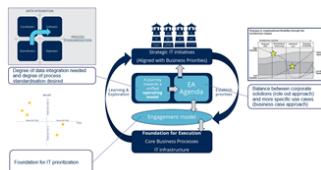
### Services

- Internal Consulting Advice
- Support Solution Designs (Mature across Business and IT areas)
- Support Architecture patterns and guidelines (e.g. Integration, NFR)

### Deliverables

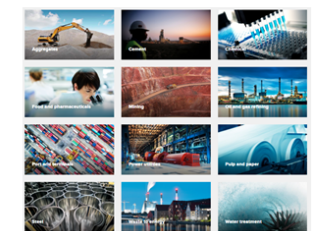
- An Architecture Practice (functions and processes)
- A catalog of models and guidelines (artefacts)
- Readmap for strategic projects and applications
- Application and portfolio Management framework

## Corporate alignment Model



## IT Operating Model

The "IT Operating Model" is a framework within consists of an "IT Demand" side providing the requirements for IT services, and an "IT Supply" side delivering the requirements in an efficient, secure and cost optimized way.



## Global IT Project Model

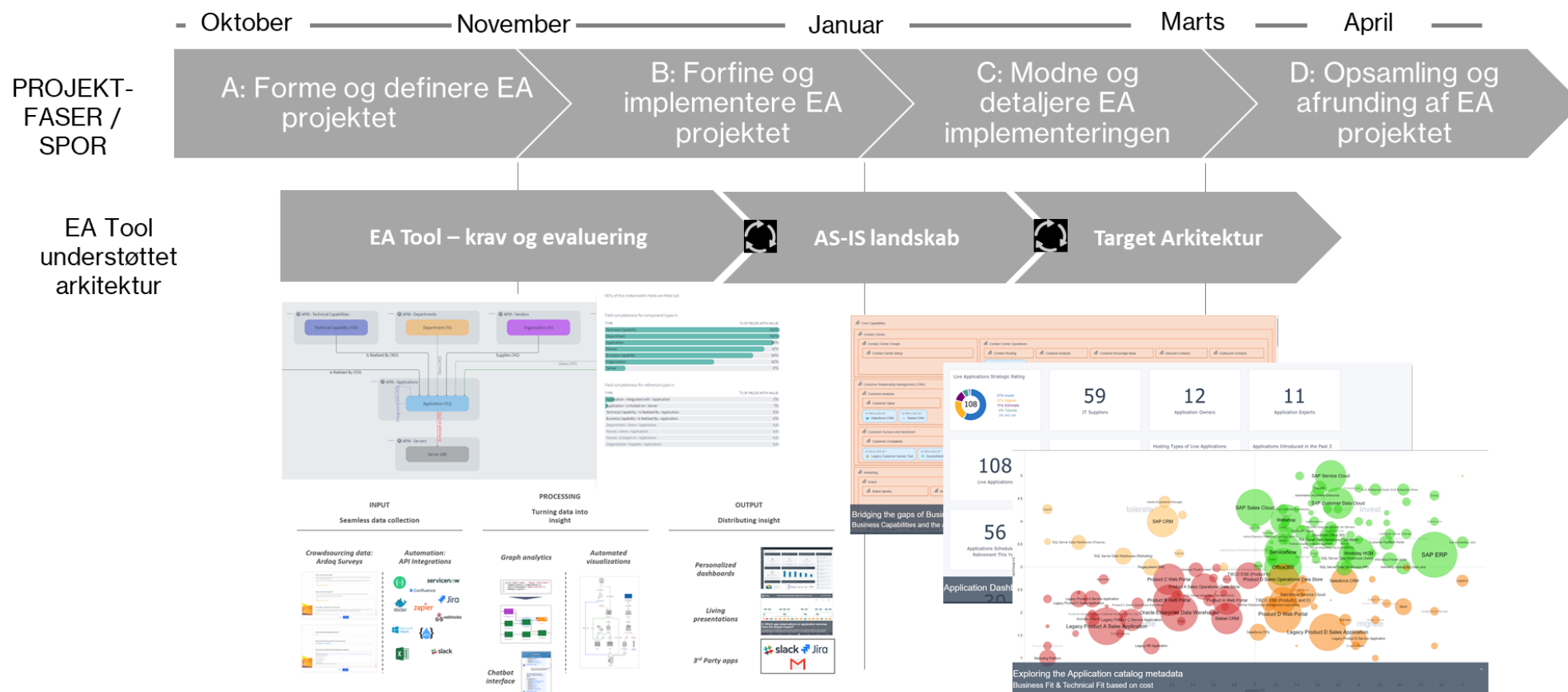
Project Phases - Waterfall + Agile approach



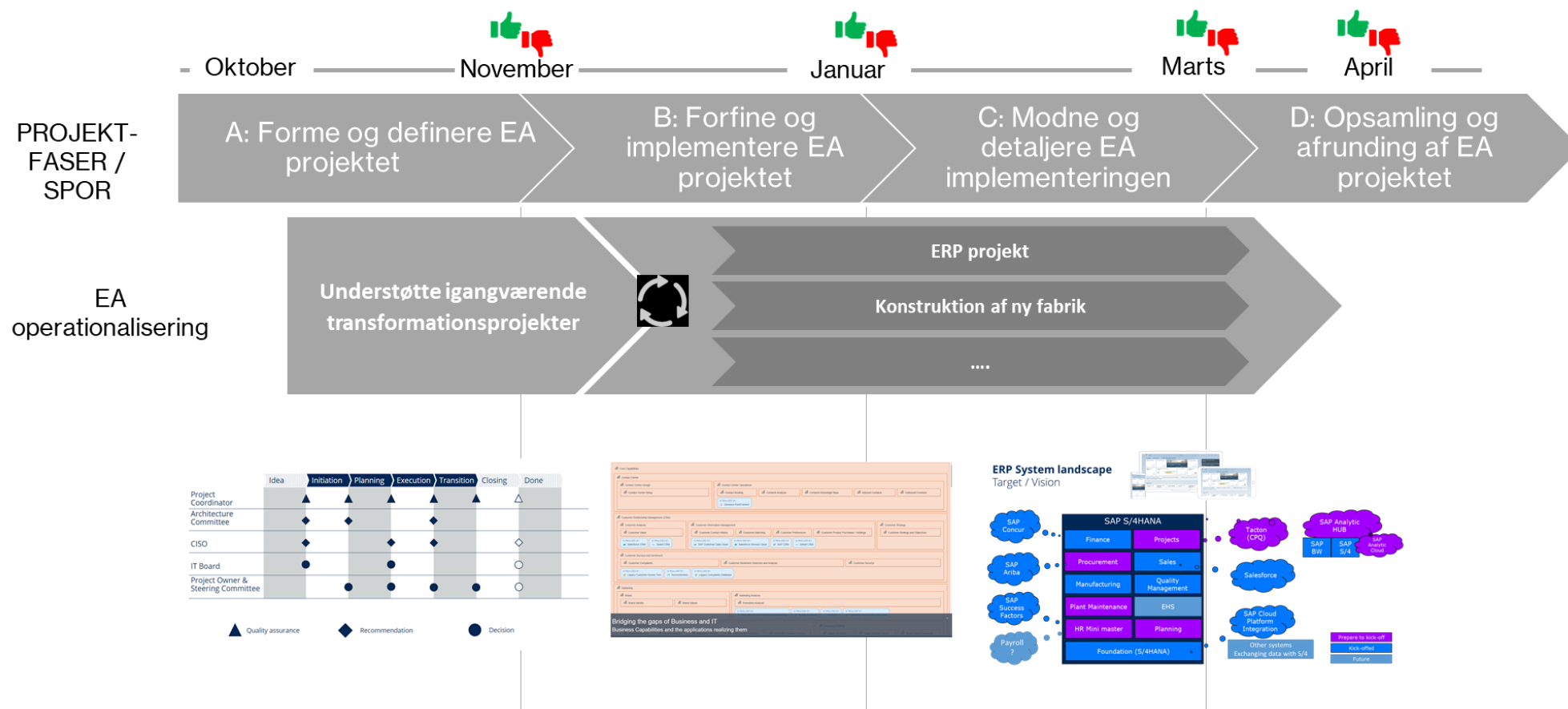
	Idea	Initiation	Planning	Execution	Transition	Closing	Done
Project Coordinator							
Architecture Committee							
CSO							
IT Board							
Project Owner & Steering Committee							

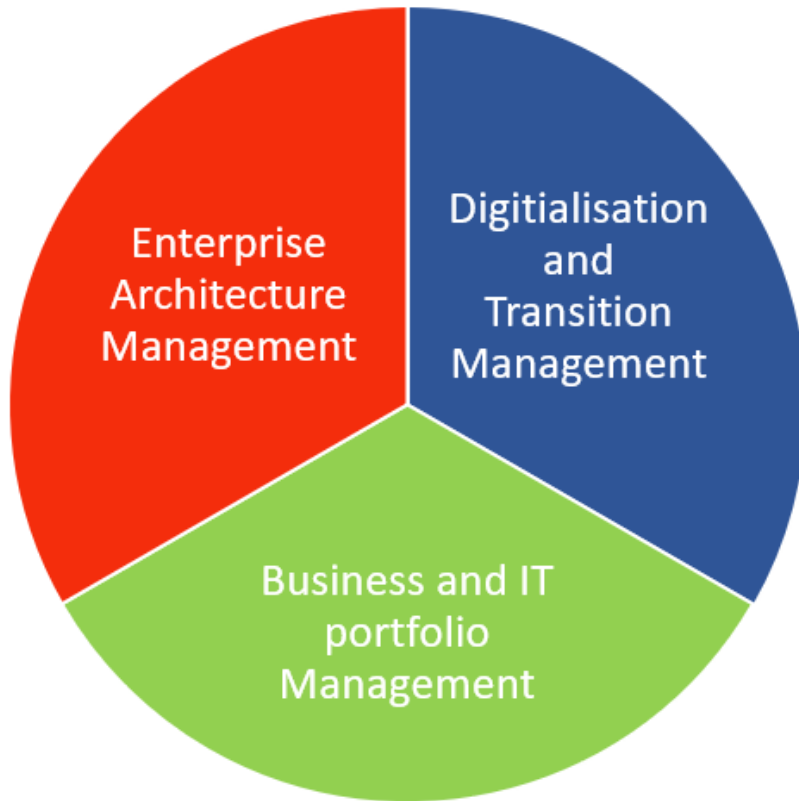
▲ Quality assurance ◆ Recommendation ● Decision

# EA Tool support



# Applying EA





# Empower you

---

Our philosophy is to empower you:

- We aim to raise the level of competence in your company rather than just deliver a solution
- We believe that we help you more by making you skilled than by solving your specific problem
- We would rather coach and train you to choose the right IT systems than choose them for you
- We would rather enable you to challenge the IT suppliers than be the IT supplier
- We start where you are and at your pace